



User Guide

FPTS Technical Chart 3.0

Table of Contents

Table of Contents	2
A. Login	3
1. Direct access.....	3
2. Access from FPTs online service websites	3
B. How to use the FPTs Technical Chart.....	4
I. Toolbars	5
1. Vertical toolbar	5
1.1. Drawing tools	5
1.2. Other tools	5
1.2.1. Measure	6
1.2.2. Zoom In/Zoom Out	6
1.2.3. Magnet	6
1.2.4. Stay in Drawing Mode	6
1.2.5. Lock All Drawing Tools	7
1.2.6. Hide All Drawing Tools	7
1.2.7. Show Objects Tree	7
1.2.8. Remove Drawing Tools	8
2. Horizontal toolbar	8
2.1. Symbol.....	8
2.2. Timeframe.....	9
2.3. Chart types	9
2.4. Compare	9
2.5. Indicators	10
2.6. Undo/Redo.....	10
2.7. Screenshot.....	10
2.8. Save	10
2.9. Chart Properties.....	12
2.10. Full Screen Mode.....	13
II. Technical Chart	13

A. Login

You can use the FPT Technical Chart by one of the following methods:

1. Direct access

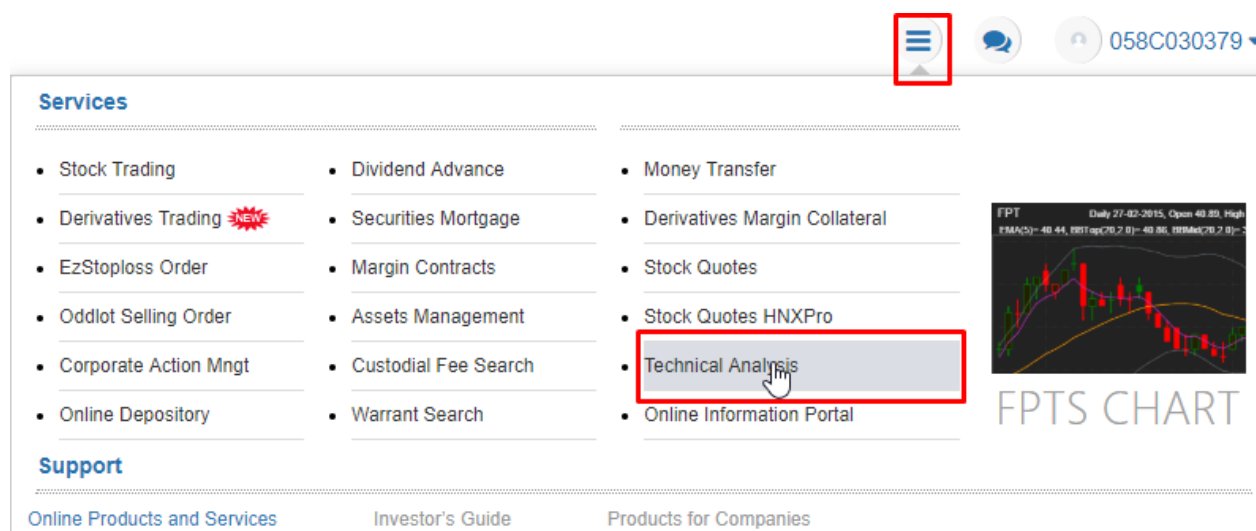
You can log in and use the FPT Technical Chart 3.0 from the link address: <https://ezfutures.fpts.com.vn/chart3> (use your stock trading account and login password).

2. Access from FPT online service websites

Logging in the FPT online trading systems (e.g. EzTrade, EzFutures and Liveprice), you can directly access the FPT Technical Chart in one of the following ways:

- EzTrade: <https://eztrade.fpts.com.vn>
- EzFutures: <https://ezfutures.fpts.com.vn>
- LivePrice: <https://liveprice.fpts.com.vn>

From the Service Board Vào mục **Biểu đồ kỹ thuật** trên thanh công cụ nhanh của FPT:



The screenshot shows the FPT online service website interface. At the top right, there is a navigation bar with a menu icon (highlighted with a red box), a chat icon, and a user ID '058C030379'. Below this is a 'Services' section with a grid of service categories:

- Stock Trading
- Derivatives Trading **NEW**
- EzStoploss Order
- Oddlot Selling Order
- Corporate Action Mngt
- Online Depository
- Dividend Advance
- Securities Mortgage
- Margin Contracts
- Assets Management
- Custodial Fee Search
- Warrant Search
- Money Transfer
- Derivatives Margin Collateral
- Stock Quotes
- Stock Quotes HNXPro
- Technical Analysis** (highlighted with a red box)
- Online Information Portal

To the right of the services list is a preview of the 'FPTS CHART' showing a candlestick chart with technical indicators. Below the services list is a 'Support' section with links for 'Online Products and Services', 'Investor's Guide', and 'Products for Companies'.

Or right-click on the securities symbol and select **Technical Analysis**

Symbol	Ref	Ceiling	Floor	Bid						Order matching		
				Pr3	Vol3	Pr2	Vol2	Pr1	Vol1	Price	Vol	+/-
ACB	29.6	32.5	26.7	29.2	55,900	29.3	62,500	29.4	36,800	29.5	200	-0.1
BVI				79	12,880	79.2	10	79.3	2,400	79.5	379,090	-0.9
DPI				9	291,460	15.95	306,510	16	406,120	16	4,015,010	-0.3
FPT				25	12,790	45.3	6,310	45.35	8,540	45.4	69,740	
HAC				07	34,510	5.08	72,000	5.09	4,990	5.09	172,030	-0.04
HPC				6	137,420	23.65	132,410	23.7	44,780	23.7	1,254,080	0.1
STB				35	778,890	11.4	2,197,900	11.45	1,047,920	11.45	8,334,920	-0.05
VCI				7	8,800	70.8	1,500	71	195,610	71	972,200	-0.5
VNI				7	1,350	124.8	260	125.3	500	125.5	2,047,860	2.2

B. How to use the FPT Technical Chart

The FPT Technical Chart 3.0 consists of two components:

- Toolbars
- Technical analysis chart



I. Toolbars

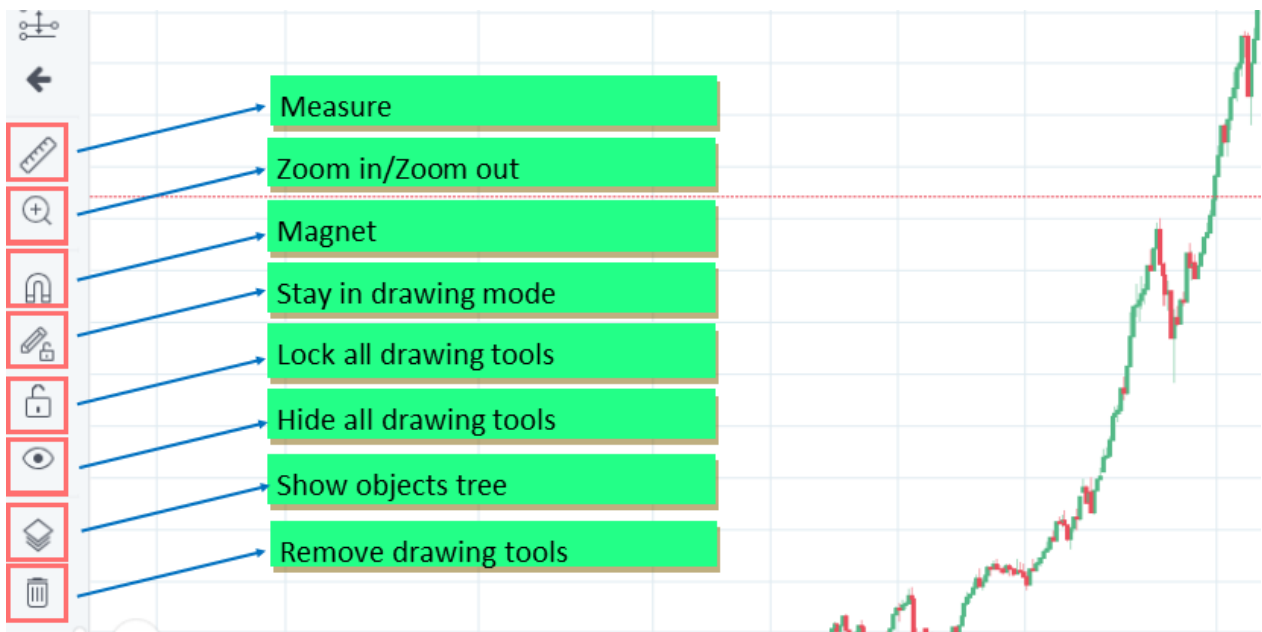
1. Vertical toolbar

1.1. Drawing tools



Upper vertical drawing and pattern tools help you add trend lines, price channels and technical patterns for your technical analysis.

1.2. Other tools



1.2.1. Measure

This tool enables you to measure candlesticks (trading days), days and price spreads in a given time.

1.2.2. Zoom In/Zoom Out

This tool helps you zoom in the chart in a given time by dragging the mouse cursor in the time range that you want to view.

Note: The Zoom out tool only appears after you use Zoom In feature.

1.2.3. Magnet

This tool helps you draw drawn dots toward the values on the chart, thus helping draw trend lines and patterns more quickly, etc.

EzFutures Phân tích kỹ thuật



1.2.4. Stay in Drawing Mode

In the default mode, you can draw once for each time you choose the tool. If you want to draw another object with that tool, you have to click on the icon again. By activating the Stay in Drawing Mode, you can repeat drawing without having to click on the icon again as in the default mode.

EzFutures Phân tích kỹ thuật



1.2.5. Lock All Drawing Tools

The second arrow is drawn without having to click on the arrow icon on the toolbar again

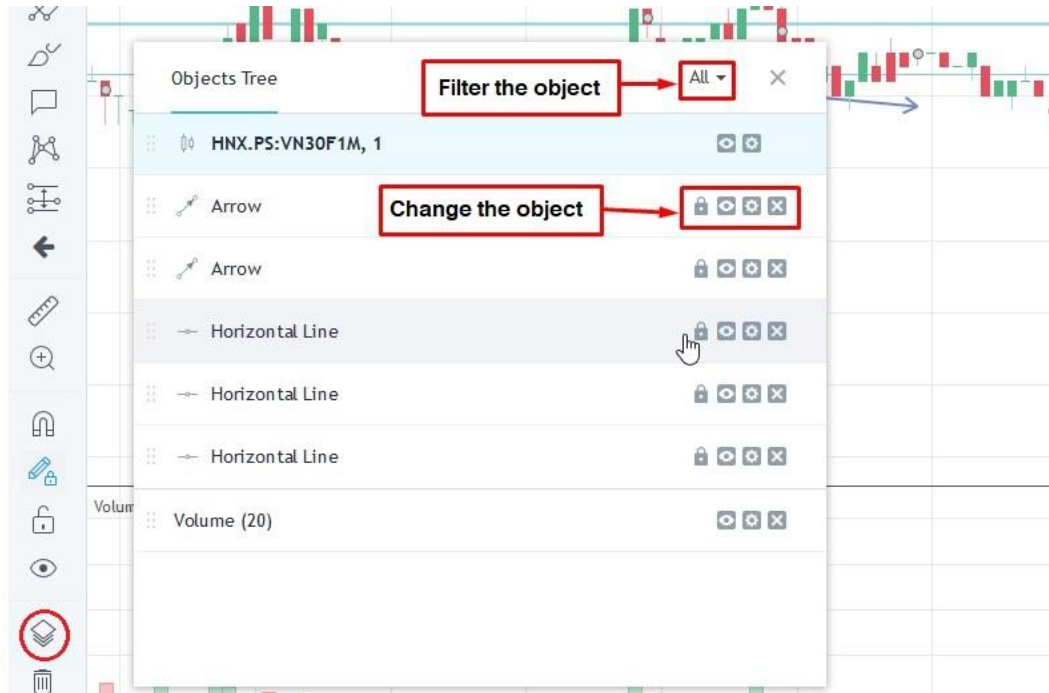
By activating this mode, you cannot remove added tools but you can still remove active tools. However, when you add new tools to the chart, the Lock All Drawing Tools feature will be deactivated.

1.2.6. Hide All Drawing Tools

When you choose this mode, all added tools will be hidden. And when you add a new drawing tool, this mode will be deactivated.

1.2.7. Show Objects Tree

If you choose Show Objects Tree, the list of objects will be displayed. Here, you can see all objects on the technical chart, including candlesticks, drawing tools and indicators. You can filter and customize objects.



1.2.8. Remove Drawing Tools

These tools enable you to:

- Remove Drawing Tools
- Remove Indicators
- Remove Drawing Tools & Indicators

2. Horizontal toolbar

The horizontal toolbar will help you pick up stock symbols on the watch list, choose candlesticks and indicators, compare stocks, and save chart layouts among other features.



2.1. Symbol

- Enter the stock symbol and watch its technical chart

- **Tips:** You can select that symbol and press the Backspace key or the Space key on the keyboard to delete the current symbol and display all hidden symbols arranged in a given order. You use the arrow key on the keyboard or the mouse cursor to select the symbol you want.

2.2. Timeframe

You can pick up the following time options for your chart:

- 1m/5m/15m/30m: 1 minute/5 minutes/15 minutes/30 minutes
- 1h: 1 hour
- D: 1 day
- W: 1 week
- Mo/2Mo: 1 month/2 months

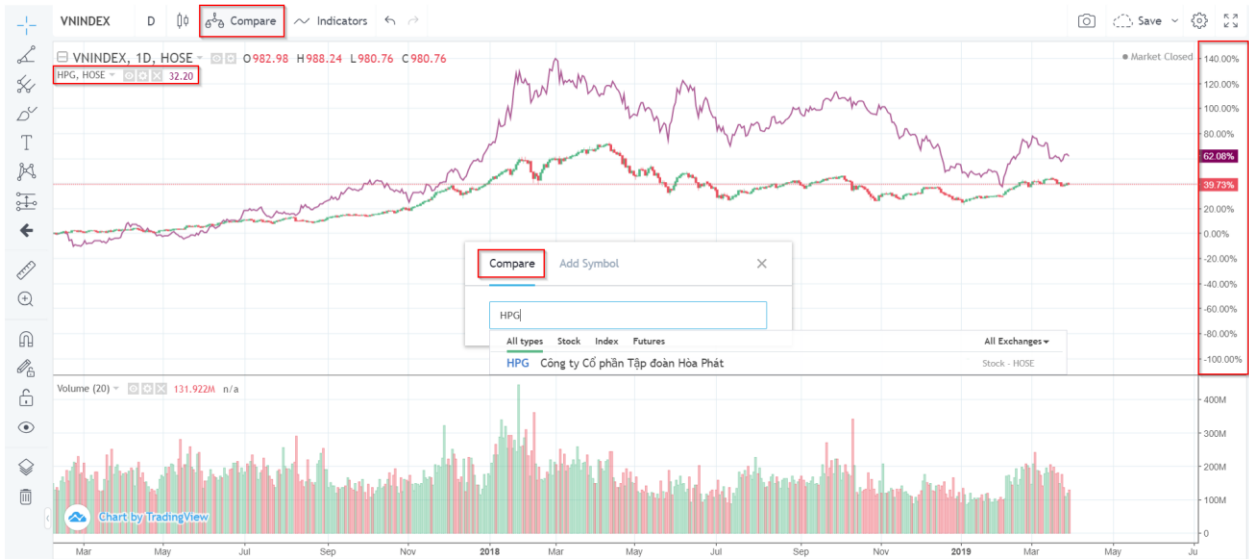
2.3. Chart types

You can choose out the following chart types:

- Bars
- Candles
- Hollow Candles
- Heikin Ashi
- Line
- Area
- Baseline: The median value (of the highest value and the lowest value) on the unit column is the neutral line. When the price moves above the line, the chart will be in green but if it goes below it, the color will be red.

2.4. Compare

- You can add one or more symbols (codes) to compare their price movements. After a symbol is added for comparison, the unit column on the right will be changed to percentage (%) to represent the percentage increase/decrease of comparable securities symbols.
- The chart of a compared symbol will be defaulted to the contour line. And the chart will take the first value shown on the chart (leftmost) as the 0% root. So, when you move the chart, changes will evolve by the same token.



2.5. Indicators

You can add technical indicators by typing the name of indicator to search or use your mouse cursor and the arrow key on the keyboard to select the indicator in the provided list.

2.6. Undo/Redo.

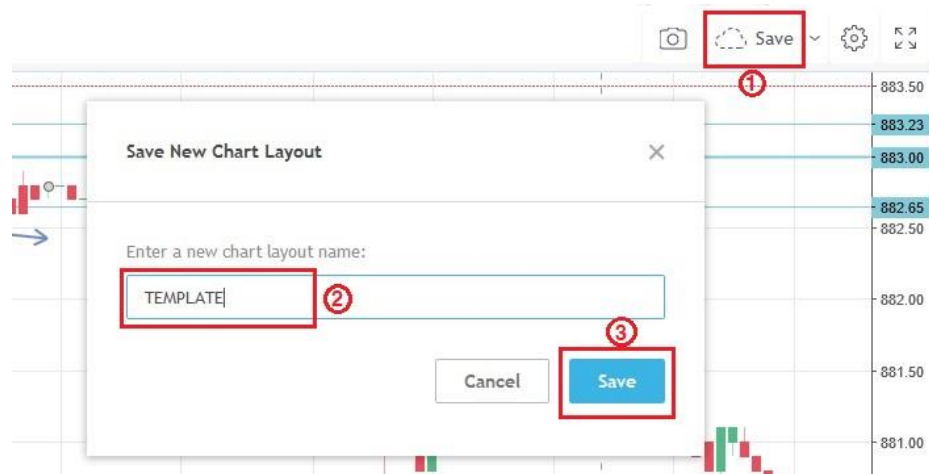
You can undo or redo your operation by using the command combinations Ctrl+Z for Undo and Ctrl+Y for Redo.

2.7. Screenshot

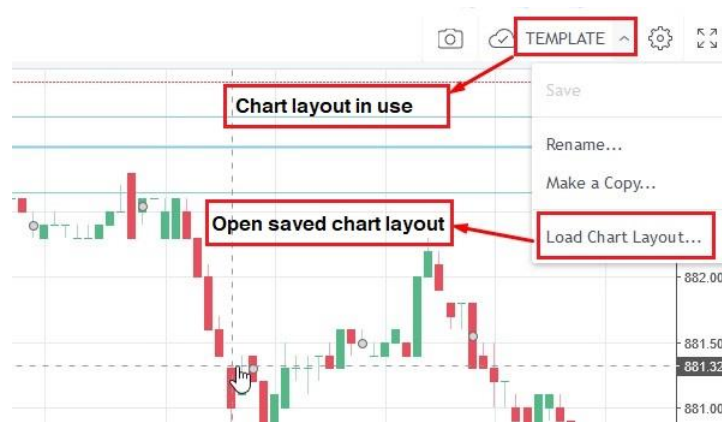
You can take the screenshot of the chart without using a third-party software to save your chart. It will save the picture in a given hyperlink from which you can download it or share it on the social network Twitter.

2.8. Save

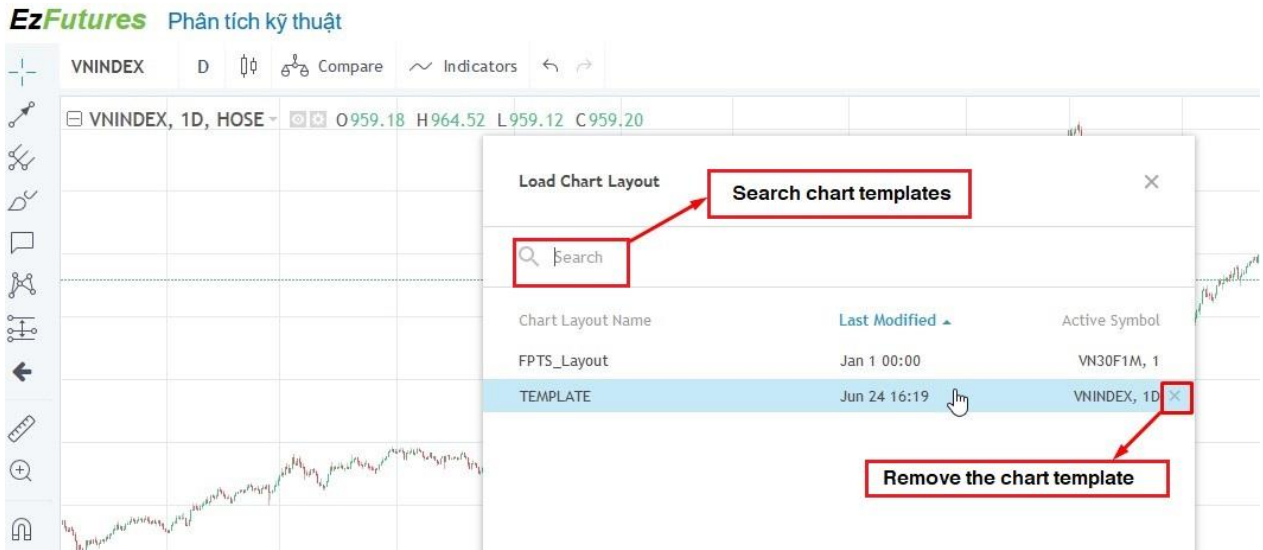
This feature helps you save your customized chart layouts. This mode is extremely useful if you use various analysis and investment strategies.



When you save your chart, enter the name for it. You can open your saved charts from the Load Chart Layout item.

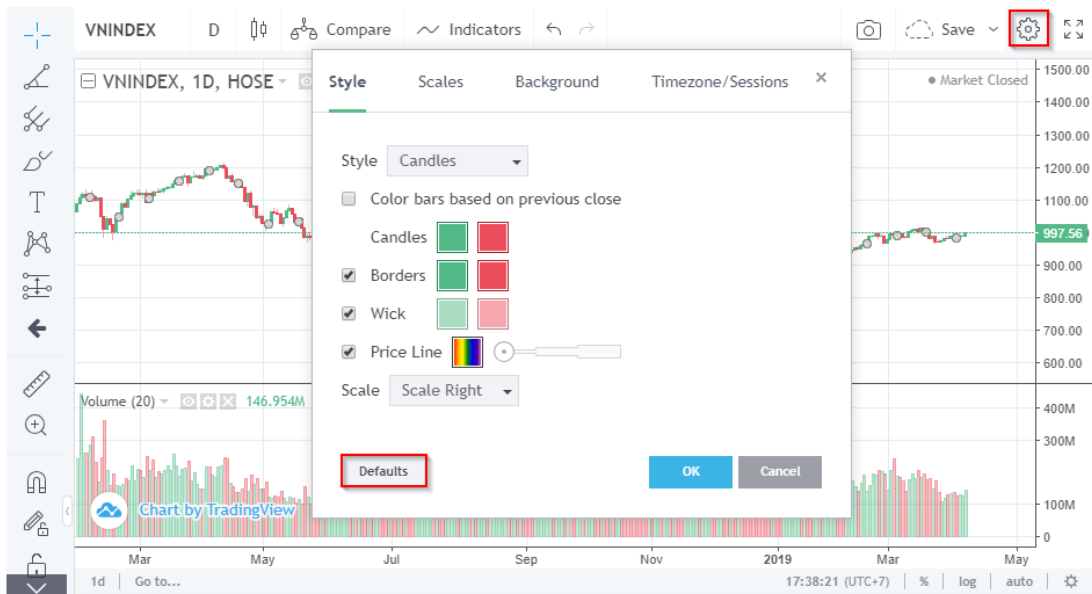


You can easily look for your saved charts and remove them from your chart list.



2.9. Chart Properties

- Style: Customize your candle type, color, border, etc.
- Scales: Customize unit bar scales, add labels and indicators, align margins, etc.
- Background: Customize background color, lines, chart information, etc.
- Timezone/Sessions: Change the timezone
- You can restore to the original settings by clicking Defaults button.



2.10. Full Screen Mode

You can open the chart in the full screen mode for easier watching. While in this mode, you can only remove indicators or drawing tools, or customize objects if they are customizable. If you want to add indicators and drawing tools, they must exit the full screen mode.

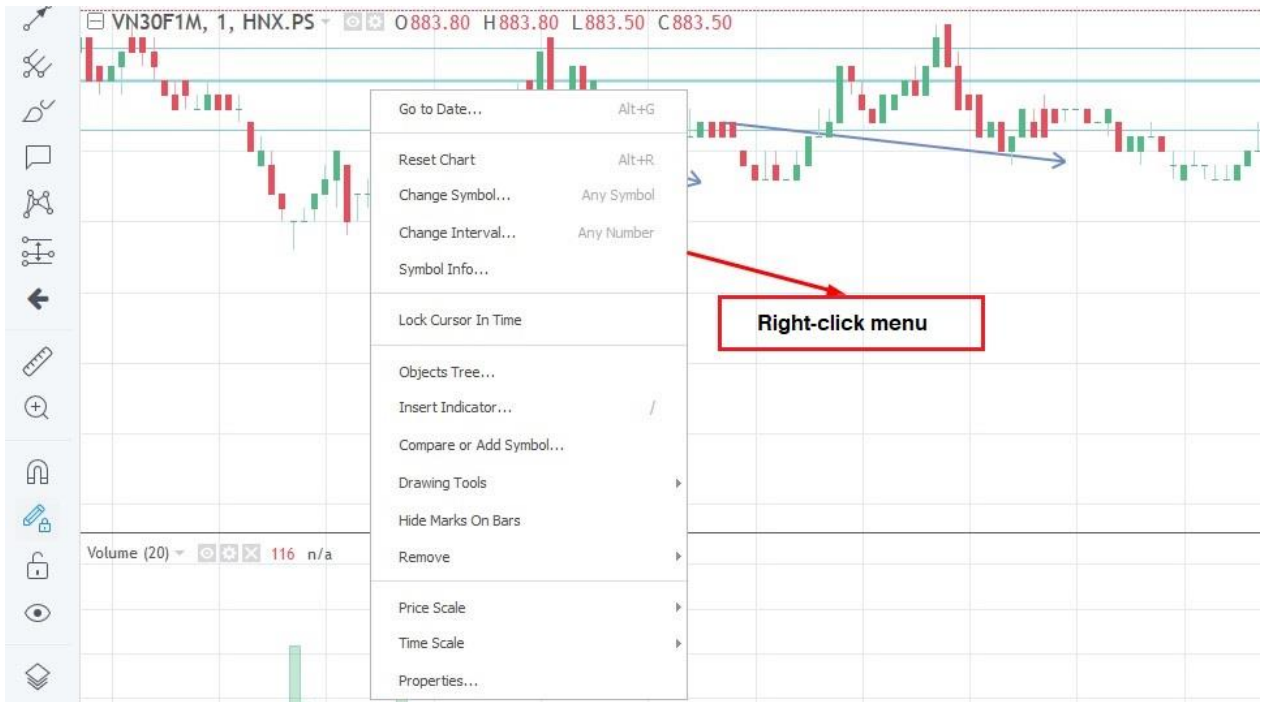
To exit the full screen mode, press the Esc key on the keyboard or move the mouse cursor over the top screen to see the X button and click on it to exit this mode.

II. Technical Chart

The FPT Technical Chart 3.0 displays the objects (e.g. drawing tools and indicators). You can customize these objects: hide objects, customize objects or delete objects right on the chart.



- Scroll: You can use your mouse to scroll the chart to stretch or narrow the time range. The root value on the left line will be kept when the value on the right changes with the time range.
- Column: You move the mouse cursor to the object unit column, hold the left mouse button and move up/down to stretch/narrow the object unit.
- Chart repositioning: You can hold down the left mouse button on any area in the Technical Chart to move the chart as you wish.
- Right-click quick operations: Right-clicking your mouse on the area you want to customize such as chart, price, object information and object unit column, you will see a lot of options that you can work with the selected object.



- 1-day chart: When you choose **1d** mode, the chart will display the 5m chart of the stock symbol in the latest trading day.
- Go to candles: You can choose the time (day/hour/minute) to find candles you want to follow.
- Timezone: You can choose international timezones for easier tracking. This timeframe will adapt to the timezone you selected.
- Chart unit: You can select units of candle charts as follows:
 - Toggle Percentage: When you select the percentage unit, the chart will take the closing price of the first candle (from left) to 0% as root.
 - Toggle Log Scale: When you select the log unit, the unit column will be divided into the certain scale according to the chart movement. Log units will reduce large changes compared to the default ratio and increase the accuracy of long-term trend lines.
 - Toggle Auto Scale: When you use the mode, the highest and lowest values of the chart will be displayed at the same time.

